



DuraVision® FDX1004T

10.4" Touch Panel Color LCD Monitor



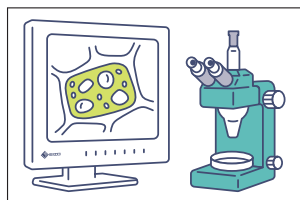
Highly Durable 10.4" Industrial Touch Panel Monitor for Factories, Control Rooms, and Other Facilities

Intuitive Touch Operation

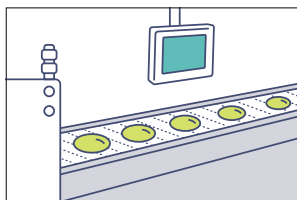
The monitor is equipped with an analog resistive touch panel that accepts touch input from gloved or bare hands, as well as styluses. The touch surface is resistant to dust, water droplets, and other objects, making it suitable for a range of environments including factories, control rooms, hospitals, public transportation facilities, and public access areas.

Flexible Installation

To meet the requirements of different industrial installations, the monitor is available in multiple configurations - with a stand or VESA mount.



With Stand



VESA Mount

Wide Brightness Range

The monitor's wide brightness range from 0.4 to 390 cd/m² allows it to be adjusted to the optimum level for viewing in either bright or dim environments.

Durable Build

The monitor can withstand temperatures ranging from 0 - 50°C for high durability in industrial environments. In addition, the cabinet does not contain any ventilation holes, making it impervious to liquids and dust.



DuraVision® FDX1004T

Clear Visibility with IPS Panel

The monitor is equipped with an IPS panel, which minimizes color shift and contrast changes when viewing the screen from an angle for optimal visibility during operations.

Flexible Positioning

The monitor can be installed in the standard upright position or rotated by 180° for inverted installation. In addition, the image display can also be rotated by 180° to match the monitor's orientation using a function accessed via the monitor's front buttons.



Standard Positioning



Upside Down Rotation

Complete Connection

The monitor is equipped with DisplayPort™, HDMI®, and D-Sub signal inputs.



USB Type-B (Upstream) DisplayPort HDMI D-Sub Mini 15 Pin RS-232C

The monitor does not support downscaling from 1080p or 720p HDMI signals.

Key Lock Function

The monitor's front buttons can be locked to prevent unintended changes to settings during operation.

Long-Term Reliability

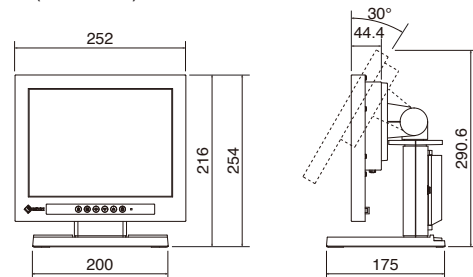
The monitor is built for 24-hour use and is backed by a 2-year manufacturer's warranty for long-term reliability.



Specifications

Model Variations		FDX1004T-TBK: with stand, black FDX1004T-TGY: with stand, gray FDX1004T-FBK: without stand, black FDX1004T-FGY: without stand, gray
Panel	Type	IPS
	Backlight	LED
	Size	10.4" (26 cm)
	Native Resolution	1024 x 768 (4:3 aspect ratio)
	Viewable Image Size (H x V)	210.4 x 157.8 mm
	Pixel Pitch	0.206 x 0.206 mm
	Display Colors	16.77 million
	Viewing Angles (H / V, typical)	178° / 178°
	Brightness (typical)	390 cd/m ²
	Contrast Ratio (typical)	1000:1
Response Time (typical)	25 ms (black-white-black)	
Touch Panel	Type	Analog resistive
	Touch Points	1
	Surface Treatment	Anti-Glare coating
	Communication Protocol	USB 2.0 / RS-232C
	Surface Hardness	2 H
	Compatible OS	Windows 11, Windows 10 (64-bit, 32-bit)
Video Signals	Input Terminals	DisplayPort (HDCP 1.3), HDMI (HDCP 1.4), D-Sub mini 15 pin
	Digital Scanning Frequency (H / V)	31 - 49 kHz / 59 - 61 Hz
	Analog Scanning Frequency (H / V)	31 - 61 kHz / 55 - 76 Hz
	Sync Formats	Separate
USB	Upstream	USB 2.0: Type-B
	Power	Power Input
Maximum Power Consumption		15W
Power Save Mode		0.5 W
Features & Functions	Preset Modes	User1, User2, sRGB
Physical Specifications	Dimensions (Landscape, W x H x D)	252 x 254 x 175 mm
	Dimensions (Without Stand, W x H x D)	252 x 216 x 44.4 mm
	Net Weight	3.5 kg
	Net Weight (Without Stand)	1.9 kg
	Tilt	30° Up, 0° Down
	Swivel	70°
	Hole Spacing (VESA Standard)	100 x 100 mm, M4, screw depth 6.8 mm
	Environmental Requirements	Operating Temperature
Operating Humidity (R.H., non condensing)		Monitor: 20 - 90% AC Adapter: 20 - 80%
Certifications & Standards (Please contact EIZO for the latest information.)		CB, CE, UKCA, CTÜVus, FCC-B, CAN ICES-3 (B), TÜV/S, VCCI-B, CCC, RCM, RoHS, WEEE, China RoHS
Supplied Accessories (May vary by country. Please contact EIZO for details.)	Signal Cables	HDMI (2 m), D-Sub mini 15 pin (1.8 m)
	Others	FDX1004T-T: AC adapter, USB Type-A - USB Type-B cable (1.8m), Setup manual, cable clamper FDX1004T-F: AC adapter, USB Type-A - USB Type-B cable (1.8m), Setup manual, cable clamper, VESA mounting screw (M4 x 12 mm) x 4
Warranty		2 Years (24-hour use)

Dimensions (Unit : mm)



EIZO Corporation

153 Shimokashiwano, Hakusan, Ishikawa 924-8566 Japan
Phone: +81-76-277-6792
<https://www.eizoglobal.com>

EIZO, the EIZO logo, and DuraVision are registered trademarks of EIZO Corporation in Japan and other countries. DisplayPort is a trademark of the Video Electronics Association in the United States and other countries. The terms HDMI, HDMI High-Definition Multimedia Interface, HDMI trade dress and the HDMI Logos are trademarks or registered trademarks of HDMI Licensing Administrator, Inc. Windows is a registered trademark of Microsoft Corporation in the United States and other countries. All other company names, product names, and logos are trademarks or registered trademarks of their respective owners. Specifications are subject to change without notice.